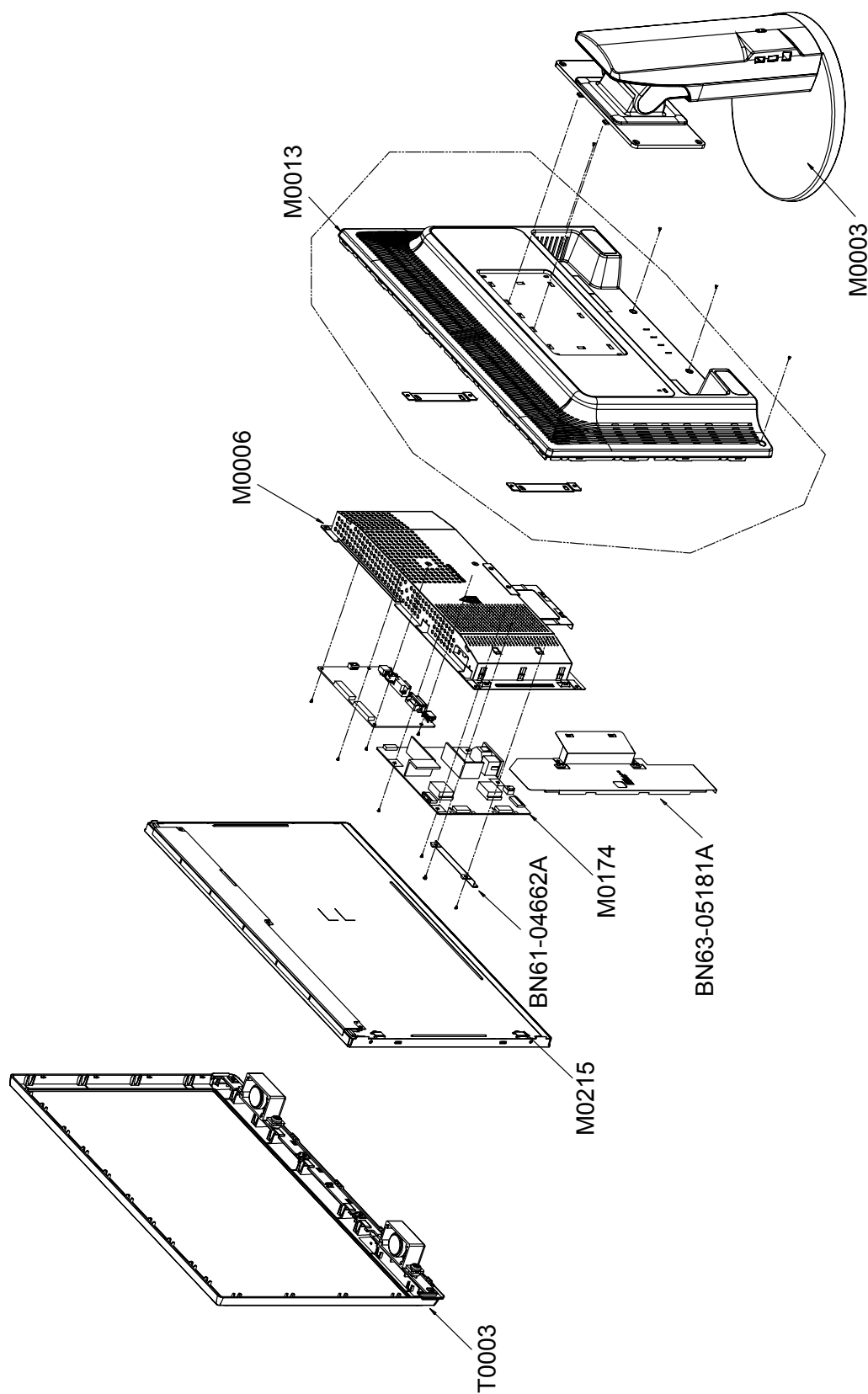


5. Exploded View & Part List

5-1. LS24KIQRBQ/XAC Exploded View (2494HM)



5-1-1. LS24KIQRBQ/XAC Parts List (2494HM)

Location No.	Code No.	Description & Specification	Q'ty	SA/SNA	Remark
M0003	BN96-06600C	ASSY STAND P;2493HM,ABS HB,BK26_SPRAY,US	1	S.A	
M0006	BN96-09149B	ASSY SHIELD P-COVER;2494HS,SECC T0.8,HAS	1	S.N.A	
M0013	BN96-09148B	ASSY COVER P-REAR;2494HM(24),HIPS,HB,BK2	1	S.A	
M0174	BN44-00226C	IP BOARD;IP-54155B,KILIMANJARO23.6", 24"	1	S.A	
M0215	BN07-00608A	LCD-PANEL;M240HW01 V0	1	S.A	
T0003	BN96-09150C	ASSY COVER P-FRONT;LS24KIV(2494HM),CANAD	1	S.A	
	BN61-04662A	BRACKET-SHIELD;LS22MY120Hz,SPTE,T0.3	1	S.N.A	
	BN63-05181A	SHIELD-LAMP;KILIMANJARO VE 24",SPTE,T0.3	1	S.N.A	

## 5-2. LS24KIQRBQ/XAC Parts List

Service Bom (SA: SERVICE AVAILABLE, SNA: SERVICE NOT AVAILABLE)

Level	Location No.	Code No.	Description & Specification	Q'ty	SA/SNA	Q'ty
		LS24KIQRBQ/ XAC	2494HM,WBB2/S24A9-LKI,24,LCD-MO,CANADA			
0.1	M0216	BN90-01427E	ASSY STAND;LS24KI,USB STAND,BLK SPRAY	1	S.N.A	
..2	M0003	BN96-06600C	ASSY STAND P;2493HM,ABS HB,BK26_SPRAY,US	1	S.A	
...3	T0081	6001-001547	SCREW-MACHINE;BH,+,M4,L10(5),ZPC(BLK),SW	4	S.N.A	
...3		6003-000275	SCREW-TAPTYPE;BH,+,B,M3,L10,ZPC(BLK),SWR	4	S.N.A	
...3		6003-000282	SCREW-TAPTYPE;BH,+,B,M3,L8,ZPC(BLK),SW	2	S.N.A	
...3		6003-000337	SCREW-TAPTYPE;BH,+,S,M4,L10,ZPC(BLK),SWR	11	S.N.A	
...3		6003-001238	SCREW-TAPTYPE;FH,+,S,M4,L8,ZPC(BLK),SWRC	4	S.N.A	
...3	M0963	BN61-00251A	FOOT;GH17BS,RUBBER,T1.6	4	S.N.A	
...3	CIS4	BN61-01438A	HOLDER-STAND;MATISSE HAS-STAND,SWRCH18A	1	S.N.A	
...3		BN61-02634A	GUIDE-STAND RETAINER;HUBBLE,ACETALI,T2.0	2	S.N.A	
...3		BN61-02919A	GUIDE-STAND LIFT;HUBBLE24",ACETAL,2.8	1	S.N.A	
...3		BN61-02921A	BRACKET-STAND BODY;HUBBLE24",SECC,2.0,OU	1	S.N.A	
...3		BN61-02922A	BRACKET-STAND LIFT;HUBBLE24",SECC,2.0,IN	1	S.N.A	
...3		BN61-03589A	GUIDE-STAND BOTTOM;2693HM,SECC,T2.0	1	S.N.A	
...3	CCM1	BN63-02183K	COVER-SHEET;Rhcm,PE Vinyl,T 0.05,250MM,2	0.4	S.N.A	
...3	CCM1	BN63-02183L	COVER-SHEET;Rhcm,PE Vinyl,T 0.05,300MM,2	0.3	S.N.A	
...3		BN63-03257B	COVER-STAND VESA;HUBBLE27",HIPS,2.8,BK23	1	S.N.A	
...3		BN63-04011A	COVER-STAND FRONT;KILIMANZARO 26",HIPS,H	1	S.N.A	
...3	T0004	BN63-04013B	COVER-STAND BASE;KILIMANZARO 26",HIPS,HB	1	S.N.A	
...3	T0003	BN63-04014A	COVER-STAND BOTTOM;KILIMANZARO 26",HIPS,	1	S.N.A	
...3		BN63-04015A	COVER-STAND LIFT REAR;KILIMANZARO 26",HI	1	S.N.A	
...3		BN63-04016A	COVER-STAND LIFT FRONT;KILIMANZARO 26",H	1	S.N.A	
...3	M0412	BN63-04017A	COVER-SWIVEL BASE;KILIMANZARO 26",ACETAL	1	S.N.A	
...3		BN63-04018A	COVER-STAND HINGE;KILIMANZARO 26",HIPS,H	1	S.N.A	
...3		BN63-04019B	COVER-STAND USB;KILIMANZARO 26",ABS,HB,B	1	S.N.A	
...3	T0081	BN73-00085A	RUBBER CUSHION;MATISSE,Φ4.5(IN SIDE),CL	1	S.N.A	
...3	M0126	BN96-05211A	ASSY STAND P-SPRING;- ,HUBBLE 24",- ,SUS,W	2	S.N.A	
...3	T0054	BN96-06458B	ASSY HINGE P;2493HM,SECC T2.0	1	S.N.A	
...3	M0852	BN96-06638A	ASSY USB P;LS26KIEEFV/XAA,65X35	1	S.A	
....4		0406-001217	DIODE-TVS;NUP4301MR6,6/-/-V,500W,TSOP-6	2	S.A	
....4	Q409	0505-000110	FET-SILICON;2N7002,N,60V,115mA,7.5ohm,0.	1	S.A	
....4	Q409	0505-001957	FET-SILICON;NTR2101P,P,-8V,-3.7A,0.052oh	1	S.A	
....4	T0596	0904-002329	IC-USC;USB2514,QFN,36P,6.55x6.55mm,58.6K	1	S.A	
....4	T0087	1203-002842	IC-POS.FIXED REG.;AP1117D-33A,TO-252,3P	1	S.A	
....4	P803T	1404-001223	THERMISTOR-PTC;45mohm,20,6V,0Vac,40A,4A,	1	S.A	
....4	X202	2801-003326	CRYSTAL-SMD;24MHZ,30PPM,28-ABX,20PF,50OH	1	S.A	
...3	M0007	BN96-01524H	ASSY STAND P-STOPPER;LS26KI,SUS,D3.0, L4	1	S.N.A	
...3		BN61-05219A	GUIDE-STAND BODY;LS26KI,PC(G/F 20%),BK50	1	S.N.A	
0.1	M0001	BN90-01865C	ASSY COVER FRONT;LS24KI(2494HM),CANADA,B	1	S.N.A	
..2	T0003	BN96-09150C	ASSY COVER P-FRONT;LS24KIV(2494HM),CANAD	1	S.A	
...3	CCM1	BN63-02183D	COVER-SHEET;Rhcm,PE Vinyl,T0.05,680mm,20	0.5	S.N.A	
...3	M0112	BN63-05176B	COVER-FRONT;LS24KI(2494HM),ABS,PMMA,BK2	1	S.N.A	

## 5. Exploded View & Part List

Level	Location No.	Code No.	Description & Specification	Q'ty	SA/SNA	Q'ty
...3	T0056	BN63-05177B	COVER-DECORATION;LS24KIQ,ABS,HB,DG/SPRAY	1	S.N.A	
...3	M0130	BN67-00210A	LENS LED;KILIMANZARO 26",PC CLEAR	1	S.N.A	
...3	T0175	BN96-06823D	ASSY SPEAKER P;16ohm,Kilimanzaro-VE,Moni	1	S.A	
...3	CIS1	BN74-00021A	TAPE-FILAMENT;Filament tape,clear,#8915,	0.06	S.N.A	
...3	M0175	BN96-10836C	ASSY BOARD P-TOUCH FUNCTION;KILIMANJARO,	1	S.A	
...3	T0382	BN61-04472A	HOLDER-CARE;PJT,PET,0.15mm,30mm,33m,clea	0.32	S.N.A	
...3	T0069	AA63-60122K	SPACER-FELT;SPD-42P3S,FELT,L60,D20,T0.35	1	S.N.A	
0.1	M0002	BN90-01866B	ASSY COVER REAR;KILIMANZARO24,VE,2494HM	1	S.N.A	
..2	C/F+C/R	6003-000275	SCREW-TAPTYPE;BH,+,B,M3,L10,ZPC(BLK),SWR	4	S.N.A	
..2	M0013	BN96-09148B	ASSY COVER P-REAR;2494HM(24),HIPS,HB,BK2	1	S.A	
...3	M0113	BN61-02806A	BRACKET-VESA;LS20MEW,SECC,T1.0	2	S.N.A	
...3	M0006	BN63-05178B	COVER-REAR;KILIMANZARO VE 24",HIPS,HB,HA	1	S.N.A	
...3	M0126	BN73-00170E	RUBBER-FOOT;T190P (CMO-PANEL), RUBBER,	6	S.N.A	
0.1		BN91-02289R	ASSY LCD-ATZ;KILIMANJARO VE	1	S.N.A	
..2	M0215	BN07-00608A	LCD-PANEL;M240HW01 V0	1	S.A	
0.1		BN91-02959N	ASSY CHASSIS-ATZ,W/W,VE,HAS;LS24KIVRFV/X	1	S.N.A	
..2	IP/BO+SH/C	6003-000115	SCREW-TAPTYPE;BH,+,B,M3,L6,ZPC(BLK),SWRC	3	S.N.A	
..2	MAIN+SH/CO	6003-000115	SCREW-TAPTYPE;BH,+,B,M3,L6,ZPC(BLK),SWRC	4	S.N.A	
..2	IP/BO+SH/C	6003-001439	SCREW-TAPTYPE;BH,+,S,M4,L8,ZPC(WHT),SWRC	1	S.N.A	
..2	M0174	BN44-00226C	IP BOARD;IP-54155B,KILIMANJARO23.6", 24"	1	S.A	
..2		BN61-04662A	BRACKET-SHIELD;LS22MY120Hz,SPTE,T0.3	1	S.N.A	
..2	M0131	BN63-03477A	GASKET;HUBBLE 27",Polyurethane+Polyester	1	S.N.A	
..2	M0006	BN96-09149B	ASSY SHIELD P-COVER;2494HS,SECC T0.8,HAS	1	S.N.A	
...3	T0527	AA65-00011C	CLAMPER CORE-WIRE;ALL MODEL,NYLON 66,V2,	1	S.N.A	
...3		BN61-02429E	STUD-PEM;PNB,M2.8,D7,L24,ZPC(SIL),SUM24L	2	S.N.A	
...3		BN61-04689A	BRACKET-STAND GUIDE;KILIMANJARO VE 24",S	1	S.N.A	
...3	M0107	BN63-05180A	SHIELD-COVER;KILIMANJARO VE 24",SECC,T0.	1	S.N.A	
...3	M0131	BN63-03474A	GASKET;HUBBLE 27",Polyurethane+Polyester	4	S.N.A	
...3	T0073	BP63-00812A	GASKET-EMI;HLS5679W,CONDUCTIVE,12mm,10mm	1	S.N.A	
..2	M0251	BN96-02854J	ASSY CABLE P;-;UL21341,FFC CABLE,120MM,1	1	S.A	
..2		BN94-02609W	ASSY PCB MAIN-ATZ,W/W,REV01;LS24KIQ*,VE,	1	S.N.A	
...3	T0245	0202-001608	SOLDER-WIRE FLUX;LFC7-107,D0.8,99.3Sn/0.	0.025	S.N.A	
...3	CN102	3701-001173	CONNECTOR-DVI;24P,3R,FEMALE,ANGLE,AUF	1	S.A	
...3	CN101	3701-001219	CONNECTOR-DSUB;15P,3R,FEMALE,ANGLE,AUF	1	S.A	
...3	CN703	3701-001388	CONNECTOR-HDMI;20P,Phosphor Bronze,ANGLE	1	S.A	
...3	CN600	3711-004121	HEADER-BOARD TO BOARD;BOX,14P,1R,2mm,ANG	1	S.A	
...3	CN330	3711-006715	HEADER-BOARD TO CABLE;BOX,4P,1R,2.5mm,AN	1	S.N.A	
...3	CN500	3722-002081	JACK-EAR PHONE;5P/2C,SnPb,L-BLU,ANGLE	1	S.A	
...3	JA330	3722-002607	JACK-PHONE;1P,Sn,LIME GREEN,ANGLE	1	S.A	
...3	HDCP	BN97-00707A	ASSY HDCP;BN46-00018A,BR20/21BS_CS,MSTAR	1	S.N.A	
....4		BN46-00018A	KEY CODE-CERTIFICATE;(HDCP KEY)PPM42M5S,	1	S.N.A	
...3	T0174	BN97-03017F	ASSY SMD;LS24KIQ*	1	S.N.A	
....4	SUB05	0202-001477	SOLDER-CREAM;LST309-M,D20~45um,96.5Sn/3A	1.251	S.N.A	
....4	D105	0401-000008	DIODE-SWITCHING;DAN217,80V,100MA,SOT-23,	1	S.N.A	
....4	D106	0401-000008	DIODE-SWITCHING;DAN217,80V,100MA,SOT-23,	1	S.N.A	

Level	Location No.	Code No.	Description & Specification	Q'ty	SA/SNA	Q'ty
....4	D107	0401-000008	DIODE-SWITCHING;DAN217,80V,100MA,SOT-23,	1	S.N.A	
....4	D108	0401-000008	DIODE-SWITCHING;DAN217,80V,100MA,SOT-23,	1	S.N.A	
....4	D109	0401-000008	DIODE-SWITCHING;DAN217,80V,100MA,SOT-23,	1	S.N.A	
....4	D110	0401-000008	DIODE-SWITCHING;DAN217,80V,100MA,SOT-23,	1	S.N.A	
....4	D111	0401-000008	DIODE-SWITCHING;DAN217,80V,100MA,SOT-23,	1	S.N.A	
....4	D112	0401-000008	DIODE-SWITCHING;DAN217,80V,100MA,SOT-23,	1	S.N.A	
....4	D129	0401-000008	DIODE-SWITCHING;DAN217,80V,100MA,SOT-23,	1	S.N.A	
....4	D130	0401-000008	DIODE-SWITCHING;DAN217,80V,100MA,SOT-23,	1	S.N.A	
....4	D100	0401-001056	DIODE-SWITCHING;MMBD4148SE,100V,200mA,SO	1	S.A	
....4	D101	0401-001056	DIODE-SWITCHING;MMBD4148SE,100V,200mA,SO	1	S.A	
....4	D102	0401-001056	DIODE-SWITCHING;MMBD4148SE,100V,200mA,SO	1	S.A	
....4	D121	0401-001056	DIODE-SWITCHING;MMBD4148SE,100V,200mA,SO	1	S.A	
....4	D122	0401-001056	DIODE-SWITCHING;MMBD4148SE,100V,200mA,SO	1	S.A	
....4	D123	0401-001056	DIODE-SWITCHING;MMBD4148SE,100V,200mA,SO	1	S.A	
....4	D124	0401-001056	DIODE-SWITCHING;MMBD4148SE,100V,200mA,SO	1	S.A	
....4	D125	0401-001056	DIODE-SWITCHING;MMBD4148SE,100V,200mA,SO	1	S.A	
....4	D126	0401-001056	DIODE-SWITCHING;MMBD4148SE,100V,200mA,SO	1	S.A	
....4	D127	0401-001056	DIODE-SWITCHING;MMBD4148SE,100V,200mA,SO	1	S.A	
....4	D128	0401-001056	DIODE-SWITCHING;MMBD4148SE,100V,200mA,SO	1	S.A	
....4	D0254	0402-000553	DIODE-SCHOTTKY;SS24/B240,40V,2000mA,DO-2	1	S.A	
....4	ZD110	0403-000258	DIODE-ZENER;BZX84C5V6,5.2-6V,225mW,SOT-2	1	S.A	
....4	ZD111	0403-000258	DIODE-ZENER;BZX84C5V6,5.2-6V,225mW,SOT-2	1	S.A	
....4	ZD500	0403-000258	DIODE-ZENER;BZX84C5V6,5.2-6V,225mW,SOT-2	1	S.A	
....4	D103	0403-001411	DIODE-ZENER;5.49-5.73V,200mW,SOD-323,TP	1	S.N.A	
....4	D104	0403-001411	DIODE-ZENER;5.49-5.73V,200mW,SOD-323,TP	1	S.N.A	
....4	D189	0403-001411	DIODE-ZENER;5.49-5.73V,200mW,SOD-323,TP	1	S.N.A	
....4	ZD101	0403-001411	DIODE-ZENER;5.49-5.73V,200mW,SOD-323,TP	1	S.N.A	
....4	ZD102	0403-001411	DIODE-ZENER;5.49-5.73V,200mW,SOD-323,TP	1	S.N.A	
....4	D133	0403-001435	DIODE-ZENER;QZX363C5V6,5.32-5.88V,200MW,	1	S.A	
....4	D0254	0404-001020	DIODE-SCHOTTKY;BAT54C,30V,200mA,SOT-23,T	1	S.A	
....4	D0254	0404-001020	DIODE-SCHOTTKY;BAT54C,30V,200mA,SOT-23,T	1	S.A	
....4	ZD100	0406-001061	DIODE-TVS;MMQA5V6T3,5.32/5.6/5.88V,24W,S	1	S.A	
....4	Q200	0501-000342	TR-SMALL SIGNAL;KSC1623-Y,NPN,200mW,SOT-	1	S.A	
....4	Q201	0501-000342	TR-SMALL SIGNAL;KSC1623-Y,NPN,200mW,SOT-	1	S.A	
....4	Q603	0501-000342	TR-SMALL SIGNAL;KSC1623-Y,NPN,200mW,SOT-	1	S.A	
....4	Q604	0501-000342	TR-SMALL SIGNAL;KSC1623-Y,NPN,200mW,SOT-	1	S.A	
....4	Q100	0501-002080	TR-SMALL SIGNAL;2SC2412K,NPN,200mW,SC-59	1	S.A	
....4	Q103	0501-002080	TR-SMALL SIGNAL;2SC2412K,NPN,200mW,SC-59	1	S.A	
....4	Q196	0501-002080	TR-SMALL SIGNAL;2SC2412K,NPN,200mW,SC-59	1	S.A	
....4	Q203	0501-002080	TR-SMALL SIGNAL;2SC2412K,NPN,200mW,SC-59	1	S.A	
....4	Q204	0501-002080	TR-SMALL SIGNAL;2SC2412K,NPN,200mW,SC-59	1	S.A	
....4	Q206	0501-002080	TR-SMALL SIGNAL;2SC2412K,NPN,200mW,SC-59	1	S.A	
....4	Q505	0501-002080	TR-SMALL SIGNAL;2SC2412K,NPN,200mW,SC-59	1	S.A	
....4	Q601	0501-002080	TR-SMALL SIGNAL;2SC2412K,NPN,200mW,SC-59	1	S.A	
....4	Q602	0501-002080	TR-SMALL SIGNAL;2SC2412K,NPN,200mW,SC-59	1	S.A	
....4	Q409	0505-001165	FET-SILICON;SI3443BDV,P,-20V,+4.4A,65mo	1	S.A	
....4	Q409	0505-001170	FET-SILICON;SI9933ADY-T1,P,-20V,3.4A,0.0	1	S.A	
....4	Q409	0505-001957	FET-SILICON;NTR2101P,P,-8V,-3.7A,0.052oh	1	S.A	
....4	IC400	1001-000164	IC-ANALOG MULTIPLEX;74HC4052,CMOS,SOP,16	1	S.A	

# 5. Exploded View & Part List

Level	Location No.	Code No.	Description & Specification	Q'ty	SA/SNA	Q'ty
....4	IC106	1001-001496	IC-VIDEO SWITCH;PI3HDMI1210ABEX,HDMI/DVI	1	S.A	
....4	IC107	1002-001482	IC-D/A CONVERTER;WM8521H9GED/R,16bit,SOI	1	S.A	
....4	IC112	1103-001310	IC-EEPROM;24LC02B,256X8BIT,SOIC,8P,3.91X	1	S.N.A	
....4	IC112	1103-001310	IC-EEPROM;24LC02B,256X8BIT,SOIC,8P,3.91X	1	S.N.A	
....4	IC112	1103-001310	IC-EEPROM;24LC02B,256X8BIT,SOIC,8P,3.91X	1	S.N.A	
....4	IC112	1103-001410	IC-EEPROM;S-24CS08AFJ-TB-1GE,8Kbit,1Kx8,	1	S.A	
....4	T0085	1201-002119	IC-AUDIO AMP;TPA3004D2,HTQFP,48P,7x7mm,-	1	S.A	
....4	T0085	1201-002487	IC-AUDIO AMP;MAX9728A,QFN,12P,3x3mm,DUAL	1	S.A	
....4	T0087	1203-002835	IC-POSIFIXED REG.;KIA7805AF,DPAK,3P,6.6	1	S.A	
....4	T0170	1203-003059	IC-SWITCH VOL. REG.;MP1583,SOIC,8P,4.9x3	1	S.A	
....4	T0087	1203-003695	IC-POSIFIXED REG.;NCP1117ST33T3G,SOT-22	1	S.A	
....4	T0087	1203-003696	IC-POSIFIXED REG.;NCP1117DT18T5G,DPAK,3	1	S.A	
....4	IC109	1205-003502	IC-LCD CONTROLLER;SE859MD-LF,PQFP,128P,2	1	S.A	
....4	D504	1405-001232	VARISTOR;5.6Vdc,30A,1.6x0.8x0.8mm,TP	1	S.A	
....4	D505	1405-001232	VARISTOR;5.6Vdc,30A,1.6x0.8x0.8mm,TP	1	S.A	
....4	D511	1405-001232	VARISTOR;5.6Vdc,30A,1.6x0.8x0.8mm,TP	1	S.A	
....4	D512	1405-001232	VARISTOR;5.6Vdc,30A,1.6x0.8x0.8mm,TP	1	S.A	
....4	R155	2007-000043	R-CHIP;1Kohm,1%,1/10W,TP,1608	1	S.A	
....4	R161	2007-000043	R-CHIP;1Kohm,1%,1/10W,TP,1608	1	S.A	
....4	R516	2007-000052	R-CHIP;10Kohm,1%,1/10W,TP,1608	1	S.N.A	
....4	R520	2007-000052	R-CHIP;10Kohm,1%,1/10W,TP,1608	1	S.N.A	
....4	R122	2007-000070	R-CHIP;0ohm,5%,1/10W,TP,1608	1	S.N.A	
....4	R123	2007-000070	R-CHIP;0ohm,5%,1/10W,TP,1608	1	S.N.A	
....4	R1231	2007-000070	R-CHIP;0ohm,5%,1/10W,TP,1608	1	S.N.A	
....4	R163	2007-000070	R-CHIP;0ohm,5%,1/10W,TP,1608	1	S.N.A	
....4	R165	2007-000070	R-CHIP;0ohm,5%,1/10W,TP,1608	1	S.N.A	
....4	R172	2007-000070	R-CHIP;0ohm,5%,1/10W,TP,1608	1	S.N.A	
....4	R173	2007-000070	R-CHIP;0ohm,5%,1/10W,TP,1608	1	S.N.A	
....4	R201	2007-000070	R-CHIP;0ohm,5%,1/10W,TP,1608	1	S.N.A	
....4	R216	2007-000070	R-CHIP;0ohm,5%,1/10W,TP,1608	1	S.N.A	
....4	R254	2007-000070	R-CHIP;0ohm,5%,1/10W,TP,1608	1	S.N.A	
....4	R255	2007-000070	R-CHIP;0ohm,5%,1/10W,TP,1608	1	S.N.A	
....4	R264	2007-000070	R-CHIP;0ohm,5%,1/10W,TP,1608	1	S.N.A	
....4	R265	2007-000070	R-CHIP;0ohm,5%,1/10W,TP,1608	1	S.N.A	
....4	R266	2007-000070	R-CHIP;0ohm,5%,1/10W,TP,1608	1	S.N.A	
....4	R267	2007-000070	R-CHIP;0ohm,5%,1/10W,TP,1608	1	S.N.A	
....4	R268	2007-000070	R-CHIP;0ohm,5%,1/10W,TP,1608	1	S.N.A	
....4	R269	2007-000070	R-CHIP;0ohm,5%,1/10W,TP,1608	1	S.N.A	
....4	R271	2007-000070	R-CHIP;0ohm,5%,1/10W,TP,1608	1	S.N.A	
....4	R272	2007-000070	R-CHIP;0ohm,5%,1/10W,TP,1608	1	S.N.A	
....4	R273	2007-000070	R-CHIP;0ohm,5%,1/10W,TP,1608	1	S.N.A	
....4	R274	2007-000070	R-CHIP;0ohm,5%,1/10W,TP,1608	1	S.N.A	
....4	R275	2007-000070	R-CHIP;0ohm,5%,1/10W,TP,1608	1	S.N.A	
....4	R276	2007-000070	R-CHIP;0ohm,5%,1/10W,TP,1608	1	S.N.A	
....4	R277	2007-000070	R-CHIP;0ohm,5%,1/10W,TP,1608	1	S.N.A	
....4	R3994	2007-000070	R-CHIP;0ohm,5%,1/10W,TP,1608	1	S.N.A	
....4	R4018	2007-000070	R-CHIP;0ohm,5%,1/10W,TP,1608	1	S.N.A	
....4	R4029	2007-000070	R-CHIP;0ohm,5%,1/10W,TP,1608	1	S.N.A	
....4	R430	2007-000070	R-CHIP;0ohm,5%,1/10W,TP,1608	1	S.N.A	
....4	R570	2007-000070	R-CHIP;0ohm,5%,1/10W,TP,1608	1	S.N.A	
....4	R571	2007-000070	R-CHIP;0ohm,5%,1/10W,TP,1608	1	S.N.A	

## 5. Exploded View &amp; Part List

Level	Location No.	Code No.	Description & Specification	Q'ty	SA/SNA	Q'ty
....4	R611	2007-000070	R-CHIP;0ohm,5%,1/10W,TP,1608	1	S.N.A	
....4	R612	2007-000070	R-CHIP;0ohm,5%,1/10W,TP,1608	1	S.N.A	
....4	R645	2007-000070	R-CHIP;0ohm,5%,1/10W,TP,1608	1	S.N.A	
....4	R142	2007-000071	R-CHIP;22ohm,5%,1/10W,TP,1608	1	S.N.A	
....4	R143	2007-000071	R-CHIP;22ohm,5%,1/10W,TP,1608	1	S.N.A	
....4	R144	2007-000071	R-CHIP;22ohm,5%,1/10W,TP,1608	1	S.N.A	
....4	R145	2007-000071	R-CHIP;22ohm,5%,1/10W,TP,1608	1	S.N.A	
....4	R148	2007-000071	R-CHIP;22ohm,5%,1/10W,TP,1608	1	S.N.A	
....4	R149	2007-000071	R-CHIP;22ohm,5%,1/10W,TP,1608	1	S.N.A	
....4	R150	2007-000071	R-CHIP;22ohm,5%,1/10W,TP,1608	1	S.N.A	
....4	R151	2007-000071	R-CHIP;22ohm,5%,1/10W,TP,1608	1	S.N.A	
....4	R434	2007-000071	R-CHIP;22ohm,5%,1/10W,TP,1608	1	S.N.A	
....4	R435	2007-000071	R-CHIP;22ohm,5%,1/10W,TP,1608	1	S.N.A	
....4	R438	2007-000071	R-CHIP;22ohm,5%,1/10W,TP,1608	1	S.N.A	
....4	R439	2007-000071	R-CHIP;22ohm,5%,1/10W,TP,1608	1	S.N.A	
....4	R440	2007-000071	R-CHIP;22ohm,5%,1/10W,TP,1608	1	S.N.A	
....4	R521	2007-000072	R-CHIP;47ohm,5%,1/10W,TP,1608	1	S.N.A	
....4	R523	2007-000072	R-CHIP;47ohm,5%,1/10W,TP,1608	1	S.N.A	
....4	R102	2007-000074	R-CHIP;100ohm,5%,1/10W,TP,1608	1	S.A	
....4	R103	2007-000074	R-CHIP;100ohm,5%,1/10W,TP,1608	1	S.A	
....4	R104	2007-000074	R-CHIP;100ohm,5%,1/10W,TP,1608	1	S.A	
....4	R106	2007-000074	R-CHIP;100ohm,5%,1/10W,TP,1608	1	S.A	
....4	R107	2007-000074	R-CHIP;100ohm,5%,1/10W,TP,1608	1	S.A	
....4	R110	2007-000074	R-CHIP;100ohm,5%,1/10W,TP,1608	1	S.A	
....4	R111	2007-000074	R-CHIP;100ohm,5%,1/10W,TP,1608	1	S.A	
....4	R114	2007-000074	R-CHIP;100ohm,5%,1/10W,TP,1608	1	S.A	
....4	R117	2007-000074	R-CHIP;100ohm,5%,1/10W,TP,1608	1	S.A	
....4	R121	2007-000074	R-CHIP;100ohm,5%,1/10W,TP,1608	1	S.A	
....4	R154	2007-000074	R-CHIP;100ohm,5%,1/10W,TP,1608	1	S.A	
....4	R181	2007-000074	R-CHIP;100ohm,5%,1/10W,TP,1608	1	S.A	
....4	R182	2007-000074	R-CHIP;100ohm,5%,1/10W,TP,1608	1	S.A	
....4	R193	2007-000074	R-CHIP;100ohm,5%,1/10W,TP,1608	1	S.A	
....4	R194	2007-000074	R-CHIP;100ohm,5%,1/10W,TP,1608	1	S.A	
....4	R203	2007-000074	R-CHIP;100ohm,5%,1/10W,TP,1608	1	S.A	
....4	R205	2007-000074	R-CHIP;100ohm,5%,1/10W,TP,1608	1	S.A	
....4	R248	2007-000074	R-CHIP;100ohm,5%,1/10W,TP,1608	1	S.A	
....4	R251	2007-000074	R-CHIP;100ohm,5%,1/10W,TP,1608	1	S.A	
....4	R252	2007-000074	R-CHIP;100ohm,5%,1/10W,TP,1608	1	S.A	
....4	R422	2007-000074	R-CHIP;100ohm,5%,1/10W,TP,1608	1	S.A	
....4	R501	2007-000074	R-CHIP;100ohm,5%,1/10W,TP,1608	1	S.A	
....4	R526	2007-000074	R-CHIP;100ohm,5%,1/10W,TP,1608	1	S.A	
....4	R443	2007-000075	R-CHIP;220ohm,5%,1/10W,TP,1608	1	S.A	
....4	R448	2007-000075	R-CHIP;220ohm,5%,1/10W,TP,1608	1	S.A	
....4	R206	2007-000078	R-CHIP;1Kohm,5%,1/10W,TP,1608	1	S.A	
....4	R256	2007-000078	R-CHIP;1Kohm,5%,1/10W,TP,1608	1	S.A	
....4	R4032	2007-000078	R-CHIP;1Kohm,5%,1/10W,TP,1608	1	S.A	
....4	R4033	2007-000078	R-CHIP;1Kohm,5%,1/10W,TP,1608	1	S.A	
....4	R557	2007-000078	R-CHIP;1Kohm,5%,1/10W,TP,1608	1	S.A	
....4	R558	2007-000078	R-CHIP;1Kohm,5%,1/10W,TP,1608	1	S.A	
....4	R644	2007-000078	R-CHIP;1Kohm,5%,1/10W,TP,1608	1	S.A	
....4	R773	2007-000078	R-CHIP;1Kohm,5%,1/10W,TP,1608	1	S.A	

## 5. Exploded View & Part List

Level	Location No.	Code No.	Description & Specification	Q'ty	SA/SNA	Q'ty
....4	R1234	2007-000079	R-CHIP;1.8Kohm,5%,1/10W,TP,1608	1	S.A	
....4	R191	2007-000082	R-CHIP;3.3Kohm,5%,1/10W,TP,1608	1	S.N.A	
....4	R192	2007-000082	R-CHIP;3.3Kohm,5%,1/10W,TP,1608	1	S.N.A	
....4	R1229	2007-000084	R-CHIP;4.7Kohm,5%,1/10W,TP,1608	1	S.A	
....4	R1230	2007-000084	R-CHIP;4.7Kohm,5%,1/10W,TP,1608	1	S.A	
....4	R147	2007-000084	R-CHIP;4.7Kohm,5%,1/10W,TP,1608	1	S.A	
....4	R152	2007-000084	R-CHIP;4.7Kohm,5%,1/10W,TP,1608	1	S.A	
....4	R204	2007-000084	R-CHIP;4.7Kohm,5%,1/10W,TP,1608	1	S.A	
....4	R208	2007-000084	R-CHIP;4.7Kohm,5%,1/10W,TP,1608	1	S.A	
....4	R210	2007-000084	R-CHIP;4.7Kohm,5%,1/10W,TP,1608	1	S.A	
....4	R244	2007-000084	R-CHIP;4.7Kohm,5%,1/10W,TP,1608	1	S.A	
....4	R249	2007-000084	R-CHIP;4.7Kohm,5%,1/10W,TP,1608	1	S.A	
....4	R258	2007-000084	R-CHIP;4.7Kohm,5%,1/10W,TP,1608	1	S.A	
....4	R4007	2007-000084	R-CHIP;4.7Kohm,5%,1/10W,TP,1608	1	S.A	
....4	R4017	2007-000084	R-CHIP;4.7Kohm,5%,1/10W,TP,1608	1	S.A	
....4	R4019	2007-000084	R-CHIP;4.7Kohm,5%,1/10W,TP,1608	1	S.A	
....4	R500	2007-000084	R-CHIP;4.7Kohm,5%,1/10W,TP,1608	1	S.A	
....4	R219	2007-000087	R-CHIP;6.8Kohm,5%,1/10W,TP,1608	1	S.N.A	
....4	R101	2007-000090	R-CHIP;10Kohm,5%,1/10W,TP,1608	1	S.A	
....4	R119	2007-000090	R-CHIP;10Kohm,5%,1/10W,TP,1608	1	S.A	
....4	R120	2007-000090	R-CHIP;10Kohm,5%,1/10W,TP,1608	1	S.A	
....4	R141	2007-000090	R-CHIP;10Kohm,5%,1/10W,TP,1608	1	S.A	
....4	R153	2007-000090	R-CHIP;10Kohm,5%,1/10W,TP,1608	1	S.A	
....4	R164	2007-000090	R-CHIP;10Kohm,5%,1/10W,TP,1608	1	S.A	
....4	R178	2007-000090	R-CHIP;10Kohm,5%,1/10W,TP,1608	1	S.A	
....4	R179	2007-000090	R-CHIP;10Kohm,5%,1/10W,TP,1608	1	S.A	
....4	R195	2007-000090	R-CHIP;10Kohm,5%,1/10W,TP,1608	1	S.A	
....4	R198	2007-000090	R-CHIP;10Kohm,5%,1/10W,TP,1608	1	S.A	
....4	R207	2007-000090	R-CHIP;10Kohm,5%,1/10W,TP,1608	1	S.A	
....4	R209	2007-000090	R-CHIP;10Kohm,5%,1/10W,TP,1608	1	S.A	
....4	R221	2007-000090	R-CHIP;10Kohm,5%,1/10W,TP,1608	1	S.A	
....4	R245	2007-000090	R-CHIP;10Kohm,5%,1/10W,TP,1608	1	S.A	
....4	R246	2007-000090	R-CHIP;10Kohm,5%,1/10W,TP,1608	1	S.A	
....4	R247	2007-000090	R-CHIP;10Kohm,5%,1/10W,TP,1608	1	S.A	
....4	R253	2007-000090	R-CHIP;10Kohm,5%,1/10W,TP,1608	1	S.A	
....4	R257	2007-000090	R-CHIP;10Kohm,5%,1/10W,TP,1608	1	S.A	
....4	R270	2007-000090	R-CHIP;10Kohm,5%,1/10W,TP,1608	1	S.A	
....4	R3993	2007-000090	R-CHIP;10Kohm,5%,1/10W,TP,1608	1	S.A	
....4	R400	2007-000090	R-CHIP;10Kohm,5%,1/10W,TP,1608	1	S.A	
....4	R4008	2007-000090	R-CHIP;10Kohm,5%,1/10W,TP,1608	1	S.A	
....4	R4016	2007-000090	R-CHIP;10Kohm,5%,1/10W,TP,1608	1	S.A	
....4	R4034	2007-000090	R-CHIP;10Kohm,5%,1/10W,TP,1608	1	S.A	
....4	R451	2007-000090	R-CHIP;10Kohm,5%,1/10W,TP,1608	1	S.A	
....4	R452	2007-000090	R-CHIP;10Kohm,5%,1/10W,TP,1608	1	S.A	
....4	R510	2007-000090	R-CHIP;10Kohm,5%,1/10W,TP,1608	1	S.A	
....4	R511	2007-000090	R-CHIP;10Kohm,5%,1/10W,TP,1608	1	S.A	
....4	R512	2007-000090	R-CHIP;10Kohm,5%,1/10W,TP,1608	1	S.A	
....4	R524	2007-000090	R-CHIP;10Kohm,5%,1/10W,TP,1608	1	S.A	
....4	R534	2007-000090	R-CHIP;10Kohm,5%,1/10W,TP,1608	1	S.A	
....4	R649	2007-000090	R-CHIP;10Kohm,5%,1/10W,TP,1608	1	S.A	
....4	R136	2007-000097	R-CHIP;47Kohm,5%,1/10W,TP,1608	1	S.A	

## 5. Exploded View &amp; Part List

Level	Location No.	Code No.	Description & Specification	Q'ty	SA/SNA	Q'ty
....4	R4036	2007-000097	R-CHIP;47Kohm,5%,1/10W,TP,1608	1	S.A	
....4	R514	2007-000099	R-CHIP;62Kohm,5%,1/10W,TP,1608	1	S.A	
....4	R515	2007-000099	R-CHIP;62Kohm,5%,1/10W,TP,1608	1	S.A	
....4	R196	2007-000102	R-CHIP;100Kohm,5%,1/10W,TP,1608	1	S.A	
....4	R250	2007-000102	R-CHIP;100Kohm,5%,1/10W,TP,1608	1	S.A	
....4	R401	2007-000102	R-CHIP;100Kohm,5%,1/10W,TP,1608	1	S.A	
....4	R402	2007-000102	R-CHIP;100Kohm,5%,1/10W,TP,1608	1	S.A	
....4	R403	2007-000102	R-CHIP;100Kohm,5%,1/10W,TP,1608	1	S.A	
....4	R4037	2007-000102	R-CHIP;100Kohm,5%,1/10W,TP,1608	1	S.A	
....4	R424	2007-000102	R-CHIP;100Kohm,5%,1/10W,TP,1608	1	S.A	
....4	R425	2007-000102	R-CHIP;100Kohm,5%,1/10W,TP,1608	1	S.A	
....4	R426	2007-000102	R-CHIP;100Kohm,5%,1/10W,TP,1608	1	S.A	
....4	R427	2007-000102	R-CHIP;100Kohm,5%,1/10W,TP,1608	1	S.A	
....4	R457	2007-000102	R-CHIP;100Kohm,5%,1/10W,TP,1608	1	S.A	
....4	R647	2007-000102	R-CHIP;100Kohm,5%,1/10W,TP,1608	1	S.A	
....4	R670	2007-000102	R-CHIP;100Kohm,5%,1/10W,TP,1608	1	S.A	
....4	R4006	2007-000103	R-CHIP;120Kohm,5%,1/10W,TP,1608	1	S.A	
....4	R4031	2007-000109	R-CHIP;1Mohm,5%,1/10W,TP,1608	1	S.N.A	
....4	R157	2007-000113	R-CHIP;33ohm,5%,1/10W,TP,1608	1	S.N.A	
....4	R158	2007-000113	R-CHIP;33ohm,5%,1/10W,TP,1608	1	S.N.A	
....4	R280	2007-000113	R-CHIP;33ohm,5%,1/10W,TP,1608	1	S.N.A	
....4	R281	2007-000113	R-CHIP;33ohm,5%,1/10W,TP,1608	1	S.N.A	
....4	R4035	2007-000120	R-CHIP;680ohm,5%,1/10W,TP,1608	1	S.N.A	
....4	R118	2007-000124	R-CHIP;2.2Kohm,5%,1/10W,TP,1608	1	S.N.A	
....4	R140	2007-000211	R-CHIP;1.1Kohm,5%,1/10W,TP,1608	1	S.A	
....4	R1228	2007-000239	R-CHIP;1.5Kohm,1%,1/10W,TP,1608	1	S.N.A	
....4	R130	2007-000309	R-CHIP;10ohm,5%,1/10W,TP,1608	1	S.A	
....4	R132	2007-000309	R-CHIP;10ohm,5%,1/10W,TP,1608	1	S.A	
....4	R133	2007-000309	R-CHIP;10ohm,5%,1/10W,TP,1608	1	S.A	
....4	R134	2007-000309	R-CHIP;10ohm,5%,1/10W,TP,1608	1	S.A	
....4	R135	2007-000309	R-CHIP;10ohm,5%,1/10W,TP,1608	1	S.A	
....4	R137	2007-000309	R-CHIP;10ohm,5%,1/10W,TP,1608	1	S.A	
....4	R138	2007-000309	R-CHIP;10ohm,5%,1/10W,TP,1608	1	S.A	
....4	R139	2007-000309	R-CHIP;10ohm,5%,1/10W,TP,1608	1	S.A	
....4	R211	2007-000309	R-CHIP;10ohm,5%,1/10W,TP,1608	1	S.A	
....4	R213	2007-000309	R-CHIP;10ohm,5%,1/10W,TP,1608	1	S.A	
....4	R109	2007-000821	R-CHIP;390ohm,1%,1/10W,TP,1608	1	S.N.A	
....4	R217	2007-000821	R-CHIP;390ohm,1%,1/10W,TP,1608	1	S.N.A	
....4	R218	2007-000869	R-CHIP;4.7Kohm,1%,1/10W,TP,1608	1	S.N.A	
....4	R220	2007-000869	R-CHIP;4.7Kohm,1%,1/10W,TP,1608	1	S.N.A	
....4	R643	2007-000869	R-CHIP;4.7Kohm,1%,1/10W,TP,1608	1	S.N.A	
....4	R646	2007-000910	R-CHIP;43Kohm,1%,1/10W,TP,1608	1	S.A	
....4	R650	2007-000965	R-CHIP;5.1Kohm,5%,1/10W,TP,1608	1	S.N.A	
....4	R4005	2007-001010	R-CHIP;51Kohm,5%,1/10W,TP,1608	1	S.A	
....4	R115	2007-001044	R-CHIP;56ohm,5%,1/10W,TP,1608	1	S.A	
....4	R116	2007-001044	R-CHIP;56ohm,5%,1/10W,TP,1608	1	S.A	
....4	R651	2007-001068	R-CHIP;6.8Kohm,1%,1/10W,TP,1608	1	S.A	
....4	R105	2007-001164	R-CHIP;75ohm,1%,1/10W,TP,1608	1	S.N.A	
....4	R108	2007-001164	R-CHIP;75ohm,1%,1/10W,TP,1608	1	S.N.A	
....4	R113	2007-001164	R-CHIP;75ohm,1%,1/10W,TP,1608	1	S.N.A	
....4	R1237	2007-002425	R-CHIP;1ohm,5%,1/10W,TP,1608	1	S.N.A	

# 5. Exploded View & Part List

Level	Location No.	Code No.	Description & Specification	Q'ty	SA/SNA	Q'ty
....4	R1240	2007-002425	R-CHIP;1ohm,5%,1/10W,TP,1608	1	S.N.A	
....4	R1241	2007-002425	R-CHIP;1ohm,5%,1/10W,TP,1608	1	S.N.A	
....4	R4002	2007-002425	R-CHIP;1ohm,5%,1/10W,TP,1608	1	S.N.A	
....4	R4003	2007-002425	R-CHIP;1ohm,5%,1/10W,TP,1608	1	S.N.A	
....4	R4015	2007-002425	R-CHIP;1ohm,5%,1/10W,TP,1608	1	S.N.A	
....4	R4022	2007-002425	R-CHIP;1ohm,5%,1/10W,TP,1608	1	S.N.A	
....4	R4024	2007-002425	R-CHIP;1ohm,5%,1/10W,TP,1608	1	S.N.A	
....4	R4026	2007-002425	R-CHIP;1ohm,5%,1/10W,TP,1608	1	S.N.A	
....4	R4028	2007-002425	R-CHIP;1ohm,5%,1/10W,TP,1608	1	S.N.A	
....4	C510	2203-000140	C-CER,CHIP;1.5nF,10%,50V,X7R,1608	1	S.N.A	
....4	C518	2203-000140	C-CER,CHIP;1.5nF,10%,50V,X7R,1608	1	S.N.A	
....4	C111	2203-000189	C-CER,CHIP;100nF,+80-20%,25V,Y5V,1608	1	S.N.A	
....4	C1110	2203-000189	C-CER,CHIP;100nF,+80-20%,25V,Y5V,1608	1	S.N.A	
....4	C112	2203-000189	C-CER,CHIP;100nF,+80-20%,25V,Y5V,1608	1	S.N.A	
....4	C113	2203-000189	C-CER,CHIP;100nF,+80-20%,25V,Y5V,1608	1	S.N.A	
....4	C114	2203-000189	C-CER,CHIP;100nF,+80-20%,25V,Y5V,1608	1	S.N.A	
....4	C115	2203-000189	C-CER,CHIP;100nF,+80-20%,25V,Y5V,1608	1	S.N.A	
....4	C1160	2203-000189	C-CER,CHIP;100nF,+80-20%,25V,Y5V,1608	1	S.N.A	
....4	C117	2203-000189	C-CER,CHIP;100nF,+80-20%,25V,Y5V,1608	1	S.N.A	
....4	C118	2203-000189	C-CER,CHIP;100nF,+80-20%,25V,Y5V,1608	1	S.N.A	
....4	C119	2203-000189	C-CER,CHIP;100nF,+80-20%,25V,Y5V,1608	1	S.N.A	
....4	C140	2203-000189	C-CER,CHIP;100nF,+80-20%,25V,Y5V,1608	1	S.N.A	
....4	C141	2203-000189	C-CER,CHIP;100nF,+80-20%,25V,Y5V,1608	1	S.N.A	
....4	C404	2203-000189	C-CER,CHIP;100nF,+80-20%,25V,Y5V,1608	1	S.N.A	
....4	C645	2203-000189	C-CER,CHIP;100nF,+80-20%,25V,Y5V,1608	1	S.N.A	
....4	C651	2203-000189	C-CER,CHIP;100nF,+80-20%,25V,Y5V,1608	1	S.N.A	
....4	C655	2203-000189	C-CER,CHIP;100nF,+80-20%,25V,Y5V,1608	1	S.N.A	
....4	C666	2203-000189	C-CER,CHIP;100nF,+80-20%,25V,Y5V,1608	1	S.N.A	
....4	C678	2203-000189	C-CER,CHIP;100nF,+80-20%,25V,Y5V,1608	1	S.N.A	
....4	C679	2203-000189	C-CER,CHIP;100nF,+80-20%,25V,Y5V,1608	1	S.N.A	
....4	C681	2203-000189	C-CER,CHIP;100nF,+80-20%,25V,Y5V,1608	1	S.N.A	
....4	C682	2203-000189	C-CER,CHIP;100nF,+80-20%,25V,Y5V,1608	1	S.N.A	
....4	C683	2203-000189	C-CER,CHIP;100nF,+80-20%,25V,Y5V,1608	1	S.N.A	
....4	C100	2203-000236	C-CER,CHIP;0.1nF,5%,50V,C0G,1608	1	S.N.A	
....4	C101	2203-000236	C-CER,CHIP;0.1nF,5%,50V,C0G,1608	1	S.N.A	
....4	C245	2203-000236	C-CER,CHIP;0.1nF,5%,50V,C0G,1608	1	S.N.A	
....4	C654	2203-000236	C-CER,CHIP;0.1nF,5%,50V,C0G,1608	1	S.N.A	
....4	C105	2203-000257	C-CER,CHIP;10nF,10%,50V,X7R,TP,1608	1	S.A	
....4	C1127	2203-000257	C-CER,CHIP;10nF,10%,50V,X7R,TP,1608	1	S.A	
....4	C1128	2203-000257	C-CER,CHIP;10nF,10%,50V,X7R,TP,1608	1	S.A	
....4	C1129	2203-000257	C-CER,CHIP;10nF,10%,50V,X7R,TP,1608	1	S.A	
....4	C1130	2203-000257	C-CER,CHIP;10nF,10%,50V,X7R,TP,1608	1	S.A	
....4	C1161	2203-000257	C-CER,CHIP;10nF,10%,50V,X7R,TP,1608	1	S.A	
....4	C1162	2203-000257	C-CER,CHIP;10nF,10%,50V,X7R,TP,1608	1	S.A	
....4	C139	2203-000257	C-CER,CHIP;10nF,10%,50V,X7R,TP,1608	1	S.A	
....4	C428	2203-000257	C-CER,CHIP;10nF,10%,50V,X7R,TP,1608	1	S.A	
....4	C429	2203-000257	C-CER,CHIP;10nF,10%,50V,X7R,TP,1608	1	S.A	
....4	C646	2203-000257	C-CER,CHIP;10nF,10%,50V,X7R,TP,1608	1	S.A	
....4	C650	2203-000257	C-CER,CHIP;10nF,10%,50V,X7R,TP,1608	1	S.A	
....4	C122	2203-000384	C-CER,CHIP;0.015nF,5%,50V,C0G,1608	1	S.N.A	
....4	C1131	2203-000440	C-CER,CHIP;1nF,10%,50V,X7R,1608	1	S.A	

## 5. Exploded View &amp; Part List

Level	Location No.	Code No.	Description & Specification	Q'ty	SA/SNA	Q'ty
....4	C1132	2203-000440	C-CER,CHIP;1nF,10%,50V,X7R,1608	1	S.A	
....4	C1133	2203-000440	C-CER,CHIP;1nF,10%,50V,X7R,1608	1	S.A	
....4	C1134	2203-000440	C-CER,CHIP;1nF,10%,50V,X7R,1608	1	S.A	
....4	C252	2203-000440	C-CER,CHIP;1nF,10%,50V,X7R,1608	1	S.A	
....4	C120	2203-000626	C-CER,CHIP;0.022nF,5%,50V,C0G,1608	1	S.N.A	
....4	C121	2203-000626	C-CER,CHIP;0.022nF,5%,50V,C0G,1608	1	S.N.A	
....4	C123	2203-000626	C-CER,CHIP;0.022nF,5%,50V,C0G,1608	1	S.N.A	
....4	C230	2203-000626	C-CER,CHIP;0.022nF,5%,50V,C0G,1608	1	S.N.A	
....4	C231	2203-000626	C-CER,CHIP;0.022nF,5%,50V,C0G,1608	1	S.N.A	
....4	C102	2203-000888	C-CER,CHIP;4.7nF,10%,50V,X7R,TP,1608	1	S.A	
....4	C103	2203-000888	C-CER,CHIP;4.7nF,10%,50V,X7R,TP,1608	1	S.A	
....4	C104	2203-000888	C-CER,CHIP;4.7nF,10%,50V,X7R,TP,1608	1	S.A	
....4	C106	2203-000888	C-CER,CHIP;4.7nF,10%,50V,X7R,TP,1608	1	S.A	
....4	C107	2203-000888	C-CER,CHIP;4.7nF,10%,50V,X7R,TP,1608	1	S.A	
....4	C110	2203-000888	C-CER,CHIP;4.7nF,10%,50V,X7R,TP,1608	1	S.A	
....4	C1174	2203-000888	C-CER,CHIP;4.7nF,10%,50V,X7R,TP,1608	1	S.A	
....4	C127	2203-000888	C-CER,CHIP;4.7nF,10%,50V,X7R,TP,1608	1	S.A	
....4	C664	2203-000975	C-CER,CHIP;47nF,10%,25V,X7R,TP,1608,-	1	S.N.A	
....4	C1146	2203-001607	C-CER,CHIP;0.22nF,5%,50V,NP0,1608	1	S.A	
....4	C649	2203-002793	C-CER,CHIP;1000nF,+80-20%,25V,Y5V,2012	1	S.N.A	
....4	C1118	2203-005005	C-CER,CHIP;100nF,10%,16V,X7R,1608	1	S.A	
....4	C1119	2203-005005	C-CER,CHIP;100nF,10%,16V,X7R,1608	1	S.A	
....4	C1147	2203-005005	C-CER,CHIP;100nF,10%,16V,X7R,1608	1	S.A	
....4	C124	2203-005005	C-CER,CHIP;100nF,10%,16V,X7R,1608	1	S.A	
....4	C125	2203-005005	C-CER,CHIP;100nF,10%,16V,X7R,1608	1	S.A	
....4	C126	2203-005005	C-CER,CHIP;100nF,10%,16V,X7R,1608	1	S.A	
....4	C131	2203-005005	C-CER,CHIP;100nF,10%,16V,X7R,1608	1	S.A	
....4	C132	2203-005005	C-CER,CHIP;100nF,10%,16V,X7R,1608	1	S.A	
....4	C195	2203-005005	C-CER,CHIP;100nF,10%,16V,X7R,1608	1	S.A	
....4	C202	2203-005005	C-CER,CHIP;100nF,10%,16V,X7R,1608	1	S.A	
....4	C203	2203-005005	C-CER,CHIP;100nF,10%,16V,X7R,1608	1	S.A	
....4	C204	2203-005005	C-CER,CHIP;100nF,10%,16V,X7R,1608	1	S.A	
....4	C205	2203-005005	C-CER,CHIP;100nF,10%,16V,X7R,1608	1	S.A	
....4	C206	2203-005005	C-CER,CHIP;100nF,10%,16V,X7R,1608	1	S.A	
....4	C207	2203-005005	C-CER,CHIP;100nF,10%,16V,X7R,1608	1	S.A	
....4	C208	2203-005005	C-CER,CHIP;100nF,10%,16V,X7R,1608	1	S.A	
....4	C209	2203-005005	C-CER,CHIP;100nF,10%,16V,X7R,1608	1	S.A	
....4	C210	2203-005005	C-CER,CHIP;100nF,10%,16V,X7R,1608	1	S.A	
....4	C211	2203-005005	C-CER,CHIP;100nF,10%,16V,X7R,1608	1	S.A	
....4	C212	2203-005005	C-CER,CHIP;100nF,10%,16V,X7R,1608	1	S.A	
....4	C213	2203-005005	C-CER,CHIP;100nF,10%,16V,X7R,1608	1	S.A	
....4	C214	2203-005005	C-CER,CHIP;100nF,10%,16V,X7R,1608	1	S.A	
....4	C215	2203-005005	C-CER,CHIP;100nF,10%,16V,X7R,1608	1	S.A	
....4	C216	2203-005005	C-CER,CHIP;100nF,10%,16V,X7R,1608	1	S.A	
....4	C220	2203-005005	C-CER,CHIP;100nF,10%,16V,X7R,1608	1	S.A	
....4	C228	2203-005005	C-CER,CHIP;100nF,10%,16V,X7R,1608	1	S.A	
....4	C229	2203-005005	C-CER,CHIP;100nF,10%,16V,X7R,1608	1	S.A	
....4	C232	2203-005005	C-CER,CHIP;100nF,10%,16V,X7R,1608	1	S.A	
....4	C235	2203-005005	C-CER,CHIP;100nF,10%,16V,X7R,1608	1	S.A	
....4	C236	2203-005005	C-CER,CHIP;100nF,10%,16V,X7R,1608	1	S.A	
....4	C237	2203-005005	C-CER,CHIP;100nF,10%,16V,X7R,1608	1	S.A	

## 5. Exploded View & Part List

Level	Location No.	Code No.	Description & Specification	Q'ty	SA/SNA	Q'ty
....4	C242	2203-005005	C-CER,CHIP;100nF,10%,16V,X7R,1608	1	S.A	
....4	C244	2203-005005	C-CER,CHIP;100nF,10%,16V,X7R,1608	1	S.A	
....4	C248	2203-005005	C-CER,CHIP;100nF,10%,16V,X7R,1608	1	S.A	
....4	C419	2203-005005	C-CER,CHIP;100nF,10%,16V,X7R,1608	1	S.A	
....4	C421	2203-005005	C-CER,CHIP;100nF,10%,16V,X7R,1608	1	S.A	
....4	C430	2203-005005	C-CER,CHIP;100nF,10%,16V,X7R,1608	1	S.A	
....4	C432	2203-005005	C-CER,CHIP;100nF,10%,16V,X7R,1608	1	S.A	
....4	C434	2203-005005	C-CER,CHIP;100nF,10%,16V,X7R,1608	1	S.A	
....4	C506	2203-005005	C-CER,CHIP;100nF,10%,16V,X7R,1608	1	S.A	
....4	C507	2203-005005	C-CER,CHIP;100nF,10%,16V,X7R,1608	1	S.A	
....4	C539	2203-005005	C-CER,CHIP;100nF,10%,16V,X7R,1608	1	S.A	
....4	C653	2203-005005	C-CER,CHIP;100nF,10%,16V,X7R,1608	1	S.A	
....4	R525	2203-005005	C-CER,CHIP;100nF,10%,16V,X7R,1608	1	S.A	
....4	C1120	2203-005065	C-CER,CHIP;1000nF,+80-20%,10V,Y5V,1608	1	S.N.A	
....4	C1121	2203-005065	C-CER,CHIP;1000nF,+80-20%,10V,Y5V,1608	1	S.N.A	
....4	C1122	2203-005065	C-CER,CHIP;1000nF,+80-20%,10V,Y5V,1608	1	S.N.A	
....4	C1123	2203-005065	C-CER,CHIP;1000nF,+80-20%,10V,Y5V,1608	1	S.N.A	
....4	C1124	2203-005065	C-CER,CHIP;1000nF,+80-20%,10V,Y5V,1608	1	S.N.A	
....4	C1125	2203-005065	C-CER,CHIP;1000nF,+80-20%,10V,Y5V,1608	1	S.N.A	
....4	C1126	2203-005065	C-CER,CHIP;1000nF,+80-20%,10V,Y5V,1608	1	S.N.A	
....4	C191	2203-005065	C-CER,CHIP;1000nF,+80-20%,10V,Y5V,1608	1	S.N.A	
....4	C223	2203-005065	C-CER,CHIP;1000nF,+80-20%,10V,Y5V,1608	1	S.N.A	
....4	C243	2203-005065	C-CER,CHIP;1000nF,+80-20%,10V,Y5V,1608	1	S.N.A	
....4	C246	2203-005065	C-CER,CHIP;1000nF,+80-20%,10V,Y5V,1608	1	S.N.A	
....4	C249	2203-005065	C-CER,CHIP;1000nF,+80-20%,10V,Y5V,1608	1	S.N.A	
....4	C251	2203-005065	C-CER,CHIP;1000nF,+80-20%,10V,Y5V,1608	1	S.N.A	
....4	C407	2203-005065	C-CER,CHIP;1000nF,+80-20%,10V,Y5V,1608	1	S.N.A	
....4	C408	2203-005065	C-CER,CHIP;1000nF,+80-20%,10V,Y5V,1608	1	S.N.A	
....4	C410	2203-005065	C-CER,CHIP;1000nF,+80-20%,10V,Y5V,1608	1	S.N.A	
....4	C415	2203-005065	C-CER,CHIP;1000nF,+80-20%,10V,Y5V,1608	1	S.N.A	
....4	C540	2203-005065	C-CER,CHIP;1000nF,+80-20%,10V,Y5V,1608	1	S.N.A	
....4	C542	2203-005065	C-CER,CHIP;1000nF,+80-20%,10V,Y5V,1608	1	S.N.A	
....4	C543	2203-005065	C-CER,CHIP;1000nF,+80-20%,10V,Y5V,1608	1	S.N.A	
....4	C546	2203-005065	C-CER,CHIP;1000nF,+80-20%,10V,Y5V,1608	1	S.N.A	
....4	C1135	2203-005249	C-CER,CHIP;100nF,10%,50V,X7R,TP,1608	1	S.N.A	
....4	C1136	2203-005249	C-CER,CHIP;100nF,10%,50V,X7R,TP,1608	1	S.N.A	
....4	C1137	2203-005249	C-CER,CHIP;100nF,10%,50V,X7R,TP,1608	1	S.N.A	
....4	C1138	2203-005249	C-CER,CHIP;100nF,10%,50V,X7R,TP,1608	1	S.N.A	
....4	C1139	2203-005249	C-CER,CHIP;100nF,10%,50V,X7R,TP,1608	1	S.N.A	
....4	C1140	2203-005249	C-CER,CHIP;100nF,10%,50V,X7R,TP,1608	1	S.N.A	
....4	C200	2203-005437	C-CER,CHIP;10000nF,+80-20%,10V,Y5V,3216	1	S.N.A	
....4	C201	2203-005437	C-CER,CHIP;10000nF,+80-20%,10V,Y5V,3216	1	S.N.A	
....4	C218	2203-005437	C-CER,CHIP;10000nF,+80-20%,10V,Y5V,3216	1	S.N.A	
....4	C412	2203-005437	C-CER,CHIP;10000nF,+80-20%,10V,Y5V,3216	1	S.N.A	
....4	C414	2203-005437	C-CER,CHIP;10000nF,+80-20%,10V,Y5V,3216	1	S.N.A	
....4	C433	2203-005437	C-CER,CHIP;10000nF,+80-20%,10V,Y5V,3216	1	S.N.A	
....4	C538	2203-005437	C-CER,CHIP;10000nF,+80-20%,10V,Y5V,3216	1	S.N.A	
....4	C659	2203-006333	C-CER,CHIP;10000nF,20%,16V,X5R,TP,3216	1	S.N.A	
....4	C1142	2203-006336	C-CER,CHIP;10000nF,10%,25V,X5R,3216	1	S.A	
....4	C1143	2203-006336	C-CER,CHIP;10000nF,10%,25V,X5R,3216	1	S.A	
....4	C1144	2203-006336	C-CER,CHIP;10000nF,10%,25V,X5R,3216	1	S.A	

## 5. Exploded View &amp; Part List

Level	Location No.	Code No.	Description & Specification	Q'ty	SA/SNA	Q'ty
....4	C1155	2203-006336	C-CER,CHIP;10000nF,10%,25V,X5R,3216	1	S.A	
....4	C420	2203-006336	C-CER,CHIP;10000nF,10%,25V,X5R,3216	1	S.A	
....4	C658	2203-006336	C-CER,CHIP;10000nF,10%,25V,X5R,3216	1	S.A	
....4	C660	2203-006336	C-CER,CHIP;10000nF,10%,25V,X5R,3216	1	S.A	
....4	C1111	2203-006361	C-CER,CHIP;10000nF,10%,10V,X5R,TP,2012	1	S.A	
....4	C1112	2203-006361	C-CER,CHIP;10000nF,10%,10V,X5R,TP,2012	1	S.A	
....4	C1113	2203-006361	C-CER,CHIP;10000nF,10%,10V,X5R,TP,2012	1	S.A	
....4	C1114	2203-006361	C-CER,CHIP;10000nF,10%,10V,X5R,TP,2012	1	S.A	
....4	C1115	2203-006361	C-CER,CHIP;10000nF,10%,10V,X5R,TP,2012	1	S.A	
....4	C1148	2203-006361	C-CER,CHIP;10000nF,10%,10V,X5R,TP,2012	1	S.A	
....4	C1149	2203-006361	C-CER,CHIP;10000nF,10%,10V,X5R,TP,2012	1	S.A	
....4	C1150	2203-006361	C-CER,CHIP;10000nF,10%,10V,X5R,TP,2012	1	S.A	
....4	C1151	2203-006361	C-CER,CHIP;10000nF,10%,10V,X5R,TP,2012	1	S.A	
....4	C1152	2203-006361	C-CER,CHIP;10000nF,10%,10V,X5R,TP,2012	1	S.A	
....4	C1153	2203-006361	C-CER,CHIP;10000nF,10%,10V,X5R,TP,2012	1	S.A	
....4	C1156	2203-006361	C-CER,CHIP;10000nF,10%,10V,X5R,TP,2012	1	S.A	
....4	C1157	2203-006361	C-CER,CHIP;10000nF,10%,10V,X5R,TP,2012	1	S.A	
....4	C1158	2203-006361	C-CER,CHIP;10000nF,10%,10V,X5R,TP,2012	1	S.A	
....4	C1159	2203-006361	C-CER,CHIP;10000nF,10%,10V,X5R,TP,2012	1	S.A	
....4	C1166	2203-006361	C-CER,CHIP;10000nF,10%,10V,X5R,TP,2012	1	S.A	
....4	C1167	2203-006361	C-CER,CHIP;10000nF,10%,10V,X5R,TP,2012	1	S.A	
....4	C1168	2203-006361	C-CER,CHIP;10000nF,10%,10V,X5R,TP,2012	1	S.A	
....4	C1169	2203-006361	C-CER,CHIP;10000nF,10%,10V,X5R,TP,2012	1	S.A	
....4	C1170	2203-006361	C-CER,CHIP;10000nF,10%,10V,X5R,TP,2012	1	S.A	
....4	C1171	2203-006361	C-CER,CHIP;10000nF,10%,10V,X5R,TP,2012	1	S.A	
....4	C1172	2203-006361	C-CER,CHIP;10000nF,10%,10V,X5R,TP,2012	1	S.A	
....4	C1173	2203-006361	C-CER,CHIP;10000nF,10%,10V,X5R,TP,2012	1	S.A	
....4	C221	2203-006361	C-CER,CHIP;10000nF,10%,10V,X5R,TP,2012	1	S.A	
....4	C222	2203-006361	C-CER,CHIP;10000nF,10%,10V,X5R,TP,2012	1	S.A	
....4	C225	2203-006361	C-CER,CHIP;10000nF,10%,10V,X5R,TP,2012	1	S.A	
....4	C226	2203-006361	C-CER,CHIP;10000nF,10%,10V,X5R,TP,2012	1	S.A	
....4	C233	2203-006361	C-CER,CHIP;10000nF,10%,10V,X5R,TP,2012	1	S.A	
....4	C234	2203-006361	C-CER,CHIP;10000nF,10%,10V,X5R,TP,2012	1	S.A	
....4	C238	2203-006361	C-CER,CHIP;10000nF,10%,10V,X5R,TP,2012	1	S.A	
....4	C240	2203-006361	C-CER,CHIP;10000nF,10%,10V,X5R,TP,2012	1	S.A	
....4	C403	2203-006361	C-CER,CHIP;10000nF,10%,10V,X5R,TP,2012	1	S.A	
....4	C418	2203-006361	C-CER,CHIP;10000nF,10%,10V,X5R,TP,2012	1	S.A	
....4	C426	2203-006361	C-CER,CHIP;10000nF,10%,10V,X5R,TP,2012	1	S.A	
....4	C427	2203-006361	C-CER,CHIP;10000nF,10%,10V,X5R,TP,2012	1	S.A	
....4	C431	2203-006361	C-CER,CHIP;10000nF,10%,10V,X5R,TP,2012	1	S.A	
....4	C436	2203-006361	C-CER,CHIP;10000nF,10%,10V,X5R,TP,2012	1	S.A	
....4	C661	2203-006361	C-CER,CHIP;10000nF,10%,10V,X5R,TP,2012	1	S.A	
....4	C676	2203-006361	C-CER,CHIP;10000nF,10%,10V,X5R,TP,2012	1	S.A	
....4	C684	2402-001257	C-AL,SMD;470uF,20%,16V,TP,8.3x10mm	1	S.A	
....4	T0052	2703-001778	INDUCTOR-SMD;3.3uH,20%,3225	1	S.A	
....4	T0052	2703-001778	INDUCTOR-SMD;3.3uH,20%,3225	1	S.A	
....4	T0052	2703-001778	INDUCTOR-SMD;3.3uH,20%,3225	1	S.A	
....4	T0052	2703-001778	INDUCTOR-SMD;3.3uH,20%,3225	1	S.A	
....4	T0052	2703-001778	INDUCTOR-SMD;3.3uH,20%,3225	1	S.A	
....4	X202	2801-003667	CRYSTAL-SMD;14.31818MHz,30ppm,28-AAN,16p	1	S.A	
....4	F103	2901-001302	FILTER-EMI SMD;20V,0.3A,0pF,2.0x1.2x1.3m	1	S.A	

## 5. Exploded View &amp; Part List

Level	Location No.	Code No.	Description & Specification	Q'ty	SA/SNA	Q'ty
....4	F103	2901-001302	FILTER-EMI SMD;20V,0.3A,0pF,2.0x1.2x1.3m	1	S.N.A	
....4	F103	2901-001302	FILTER-EMI SMD;20V,0.3A,0pF,2.0x1.2x1.3m	1	S.N.A	
....4	F103	2901-001302	FILTER-EMI SMD;20V,0.3A,0pF,2.0x1.2x1.3m	1	S.N.A	
....4	G101	3301-000316	CORE-FERRITE BEAD;120ohm,2012,TP	1	S.N.A	
....4	G101	3301-000316	CORE-FERRITE BEAD;120ohm,2012,TP	1	S.N.A	
....4	T0568	3301-001145	BEAD-SMD;60ohm,4516,TP,70ohm/45MHz,82ohm	1	S.N.A	
....4	T0568	3301-001145	BEAD-SMD;60ohm,4516,TP,70ohm/45MHz,82ohm	1	S.N.A	
....4	T0568	3301-001176	BEAD-SMD;80ohm,2012,TP,-,-	1	S.N.A	
....4	T0568	3301-001176	BEAD-SMD;80ohm,2012,TP,-,-	1	S.N.A	
....4	T0568	3301-001176	BEAD-SMD;80ohm,2012,TP,-,-	1	S.N.A	
....4	T0568	3301-001176	BEAD-SMD;80ohm,2012,TP,-,-	1	S.N.A	
....4	T0568	3301-001407	BEAD-SMD;30ohm,1608,300mA,TP,,,0.4ohm	1	S.N.A	
....4	T0568	3301-001407	BEAD-SMD;30ohm,1608,300mA,TP,,,0.4ohm	1	S.N.A	
....4	T0568	3301-001569	BEAD-SMD;600ohm,2012,1000mA,TP,520ohm/90	1	S.N.A	
....4	T0568	3301-001569	BEAD-SMD;600ohm,2012,1000mA,TP,520ohm/90	1	S.N.A	
....4	T0568	3301-001569	BEAD-SMD;600ohm,2012,1000mA,TP,520ohm/90	1	S.N.A	
....4	T0568	3301-001569	BEAD-SMD;600ohm,2012,1000mA,TP,520ohm/90	1	S.N.A	
....4	T0568	3301-001569	BEAD-SMD;600ohm,2012,1000mA,TP,520ohm/90	1	S.N.A	
....4	T0568	3301-001569	BEAD-SMD;600ohm,2012,1000mA,TP,520ohm/90	1	S.N.A	
....4	T0568	3301-001569	BEAD-SMD;600ohm,2012,1000mA,TP,520ohm/90	1	S.N.A	
....4	T0568	3301-001569	BEAD-SMD;600ohm,2012,1000mA,TP,520ohm/90	1	S.N.A	
....4	T0568	3301-001569	BEAD-SMD;600ohm,2012,1000mA,TP,520ohm/90	1	S.N.A	
....4	T0568	3301-001569	BEAD-SMD;600ohm,2012,1000mA,TP,520ohm/90	1	S.N.A	
....4	M0106	3708-001150	CONNECTOR-FPC/FFC/PIC;30P,1mm,SMD-A,SN,Y	1	S.A	
....4	T0010	BN27-00009A	COIL CHOKE;SMD 12x12x6,EOS,33uH,15%,0.12	1	S.A	
....4	S301	BN32-00005A	SENSOR SW-TILT;SPSF100100,DC5V,1mA,-10 ~	1	S.A	
....4	T0077	BN41-01136B	PCB MAIN;2494HM,FR-4,2,MP1.1,1.6,153x120	1	S.N.A	
....4	MICOM	BN97-02895D	ASSY MICOM-ATZ,W/W;LS24KIQ*	1	S.N.A	
.....5	IC115	1107-001580	IC-FLASH MEMORY;MX25L4005,4Mbit,512Kx8,S	1	S.N.A	
0.1	M0112	BN91-03067A	ASSY SHIELD;KILIMANZARO 24,VE	1	S.N.A	
..2	CIS1	BN74-00021A	TAPE-FILAMENT;Filament tape,clear,#8915,	0.06	S.N.A	
..2		BN63-05181A	SHIELD-LAMP;KILIMANJARO VE 24",SPTE,T0.3	1	S.N.A	
0.1	M0019	BN92-03021A	ASSY LABEL;LS24KIEEFV/XAA	1	S.N.A	
0.1	M0113	BN92-04140R	ASSY P/MATERIAL;LS24KIQRFB/XAA	1	S.N.A	
..2	T0376	6902-000061	BAG AIR;LDPE,T0.2,W500,L1000,TRP,370.000	0.014	S.N.A	
..2	T0376	6902-000379	BAG AIR;LDPE,T0.2,W1000,L1800,TRP,1260.0	0.004	S.N.A	
..2	T0003	6902-000604	BAG WRAPPING;LDPE,T0.02,W500,L10000,TRP,	2.73	S.N.A	
..2	M0081	6902-000609	BAG ROLL;LDPE,T0.05,W2400,L1000,TRP,30.0	0.047	S.N.A	
..2	T0524	6902-000996	BAG PE;HDPE/NITRON,T0.015/T0.5,W800,L600	1	S.N.A	
0.1	M0045	BN92-04233R	ASSY ACCESSORY;LS24KIQRBQ/XAC	1	S.N.A	
..2	T0128	BN39-00061C	CBF SIGNAL-STEREO;Mckinley,1,male,1.5m,B	1	S.A	
..2	M0114	BN39-00244G	CBF SIGNAL;D-sub cable,15P/15P,20276N,15	1	S.A	
..2	M0125	BN39-00246K	CBF SIGNAL-DVI(D);DVI-Cable,24P/24P,2027	1	S.A	
..2	M0129	BN39-00397D	CBF INTERFACE-USB CABLE;LIME-DUAL,4P/4P,	1	S.A	
..2	M0045	BN96-09373Q	ASSY ACCESSORY;LS24KIQRBQ/XAC	1	S.A	
...3	T0524	6902-000110	BAG PE;LDPE,T0.05,W250,L400,TRP,28,2,9.2	1	S.N.A	
...3		BH68-00261F	MARK RECYCLE-CARD WARRANTY-05;SyncMaster	1	S.N.A	
...3		BH68-00344C	MARK RECYCLE-03,WARRANTY CARD;SECA W'TY	1	S.N.A	
...3		BN68-01118B	MANUAL-02,TCO03 CARD;COMM,W/W,Mojo 100g,	1	S.N.A	

Level	Location No.	Code No.	Description & Specification	Q'ty	SA/SNA	Q'ty
...3		BN68-01600B	MANUAL FLYER-03,LEAFLET;COMM,SAMSUNG,Eng	1	S.N.A	
...3	M0215	BN96-06501E	ASSY MANUAL P-IB+QSG;2494HS,2494HM,SyncM	1	S.N.A	
....4	CCM1	BN59-00660E	S/W DRIVER-02,IB;2494HS, 2494HM,W/W,Sync	1	S.N.A	
....4		BN68-01387C	MANUAL FLYER-QSG;2494HS,2494HM,SyncMaste	1	S.N.A	
...3	T0268	3903-000085	CBF-POWER CORD;DT,US,BP3/YES,I(IEC C13/C	1	S.A	
0.1	M0003	BN92-04332A	ASSY BOX;LS24KIQRBQ/XAC	1	S.N.A	
..2		BN69-03153A	BOX-SET;2494HM-HAS,CB,A-01,SW-50,YEL,W64	1.02	S.N.A	
..2		BN96-02895A	ASSY MISC P-01,HANDLE PACKING;ALL MODEL,	1	S.N.A	
...3	M0103	BN66-00007A	LEVER-TOP;ALL MODEL,LDPE,WHITE,5.8g	1	S.N.A	
...3	M0102	BN66-00008A	LEVER-BOTTOM;ALL MODEL,LDPE,WHITE,4.01g	1	S.N.A	